

DUBAI CREEK

HARBOUR

THE GRAND





Table of Contents

03

ABOUT EMAAR

04

DESTINATION

07

LOCATION

09

PROJECT DESIGN OVERVIEW

11

INTERIOR DESIGN

13

AMENITIES

19

FLOOR PLANS

70

CONTACT US

About Emaar

Emaar Properties is one of the world's most valuable and admired real estate development companies. With proven competencies in property, shopping malls, retail, hospitality and leisure, Emaar shapes new lifestyles with a focus on design excellence, build quality and timely delivery.





Dubai Creek Harbour

Dubai Creek Harbour is a new world-class waterfront destination on the banks of the historic Dubai Creek and the wondrous Ras Al Khor Wildlife Sanctuary. Seamlessly integrating state-of-the-art homes with nature, this city within a city offers up a brand-new concept of 'Urban Luxe' living. In the heart of it is the Dubai Creek Tower, a global icon for the 21st century that is set to surpass the Burj Khalifa in both ambition and technology.



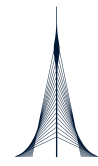
7,300,000

Sq.M Residential Area



900,000

Sq.M Retail District



A new global icon set to reshape
the Dubai Skyline



200,000

Residents



Preservation of 450
Animal Species



15

Minutes to
Dubai Int'l Airport



730,000

Sq.M Serviced Apartments



700,000

Sq.M Parks & Open Green Spaces



THE
GRAND

An Iconic “Urban Luxe” Residence



THE
GRAND

An Ideally Positioned Haven

The Grand will be situated near the heart of the dazzling Creek Island, one of Dubai Creek Harbour's nine distinct neighbourhoods. Sitting strategically at the intersection of the waterfront between the marina and the promenade, the skyscraper will be in close proximity to both Al Khail Road and Ras Al Khor Road. Reaching Downtown Dubai will not take longer than 10 minutes, while Dubai International Airport will be a mere 15-minute drive away.

THE
GRAND

Exceeding Expectations And Beyond Imagination

The Grand will perfectly embody the great ambition of Dubai Creek Harbour. Rising majestically from Creek Island, the 62-storey skyscraper will set a new standard for ultra-modern living. Envisioned as an 'Urban Luxe' retreat, the cutting-edge waterfront skyscraper is set only steps away from the flourishing marina and vibrant promenade, spoiling the residents with boundless dining, retail and entertainment experiences.

THE
GRAND



Live Life In A Futuristic Riviera



The Grand will overlook the Dubai Creek Harbour marina and the waterfront promenade, giving residents direct access to the world of yachting, as well as a healthy pedestrian-friendly lifestyle. The marina will be a happening destination known for its spectacle and diverse shopping, dining, leisure and nightlife venues. The promenade will be buzzing with cosmopolitan life on beautifully landscaped pedestrian sidewalks brimming with retail outlets.



Trendsetting Lounge With Panoramic Views

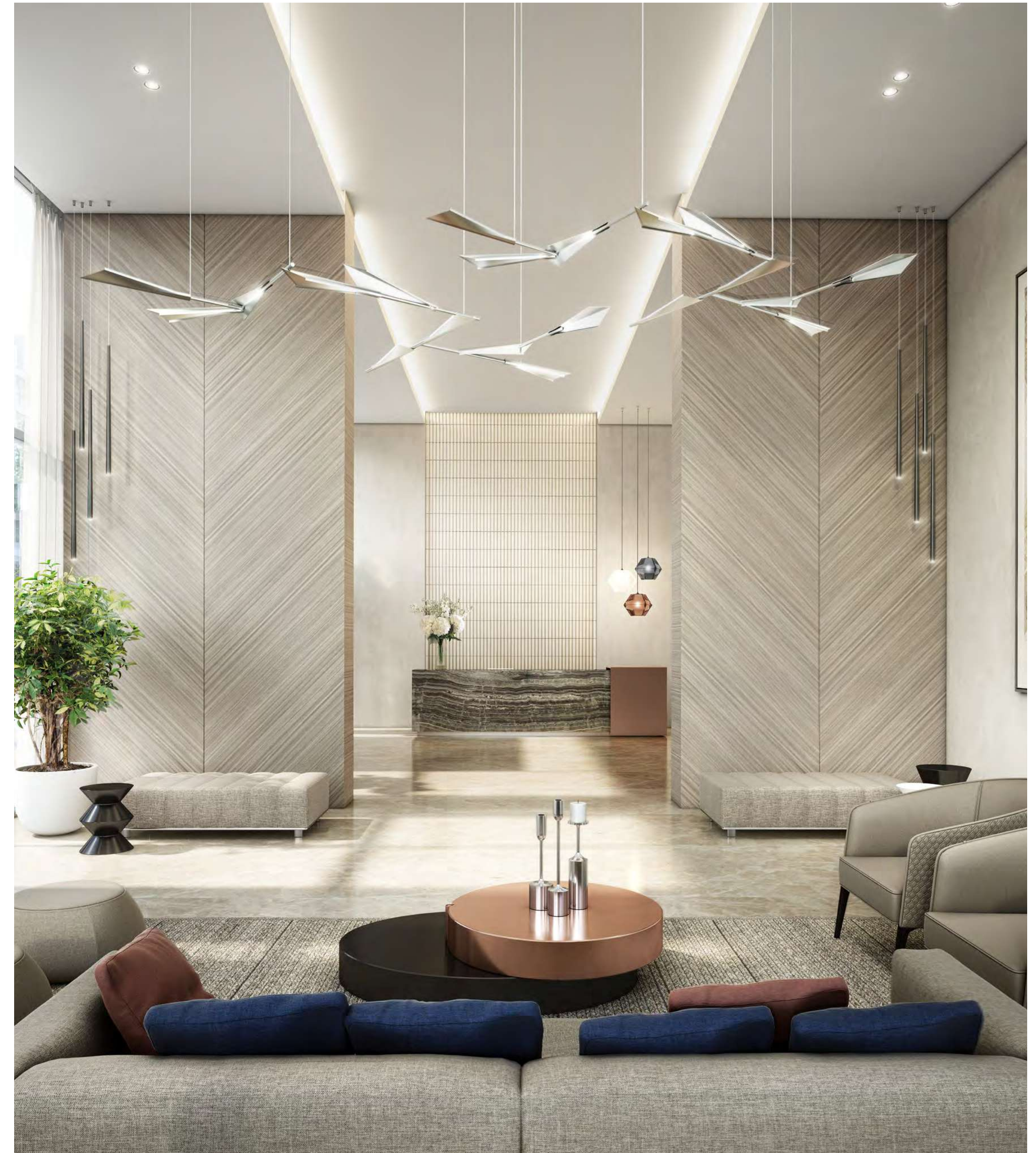


With The Grand, inspired architecture and superb craftsmanship have unified to create a building that reaches the absolute highest level of contemporary design. The skyscraper offers more than 500 premium apartments, penthouses and podium townhouses with world-class innovative designs to match the visionary surroundings. Choose between 1, 2 and 3 bedroom apartments, 4-bedroom penthouses, or podium townhouses with stunning views of the Dubai Creek Harbour marina and the Dubai skyline.

Inspired Design From The Podium Level Up

The podium level of The Grand comprises of interconnected intimate, communal and active areas creating a welcoming social space. The carefully selected materials have been chosen for their aesthetic qualities as well as efficiency and durability, ensuring The Grand is energy-efficient and environmentally friendly.

THE
GRAND





Amenities For A 21st Century Superlife

In addition to having the finest retail and dining outlets at their doorstep, residents of The Grand will have access to a glistening infinity pool with stunning views of the ever-evolving metropolis. They will also have access to cabanas, barbecue areas, children's play areas and a gymnasium.

THE
GRAND



Where Nature And The City Become One



A Multi-Purpose Area

Included amongst the broad range of sports and wellness amenities, will be an outdoor tennis court perched up against the 21st century landscape. The Grand will feature a one-of-a-kind multi-purpose sports area - a space that can transform into several types of sports courts, including volleyball, badminton, and more.

An 'Urban Luxe' Theme Throughout The Community

Residents of The Grand will have countless family-friendly amenities in the vicinity that will enhance their lives to previously unimaginable levels. From living in the supremely natural surroundings of Dubai Creek, strolling through lush parklands and landscaped promenades, enjoying various leisure and entertainment venues, and taking in the cutting-edge cultural spaces, there will be something to delight everyone.

THE
GRAND





The Search For Perfection Ends Here



Toll Free: 800 326 800

Email: info@famproperties.com

Web: www.famproperties.com