

An aerial photograph of three sailboats on a vast, deep blue sea. The boats are white with masts and are scattered across the frame. The water has a rich, dark teal hue. The text 'MINA RASHID' is overlaid in the center in a white, serif font.

MINA RASHID

EMAAR

P&O
Marinas 



EMAAR

REIMAGINING LIFESTYLES

Emaar is known as the market leader in the global real estate market. Not only is it the largest real estate company outside of China but it is also one of the most valuable developers worldwide.

BRAND VALUE
USD

2.7BN+

FY 2018

REVENUE
USD

6.99BN

FY 2018

NET PROFIT
USD

1.96BN

FY 2018

YOY BRAND
VALUE

↑ **39%**

YOY
REVENUE

↑ **37%**

YOY NET
PROFIT

↑ **30%**

Act now to register your interest and secure your premier residence at MINA RASHID.







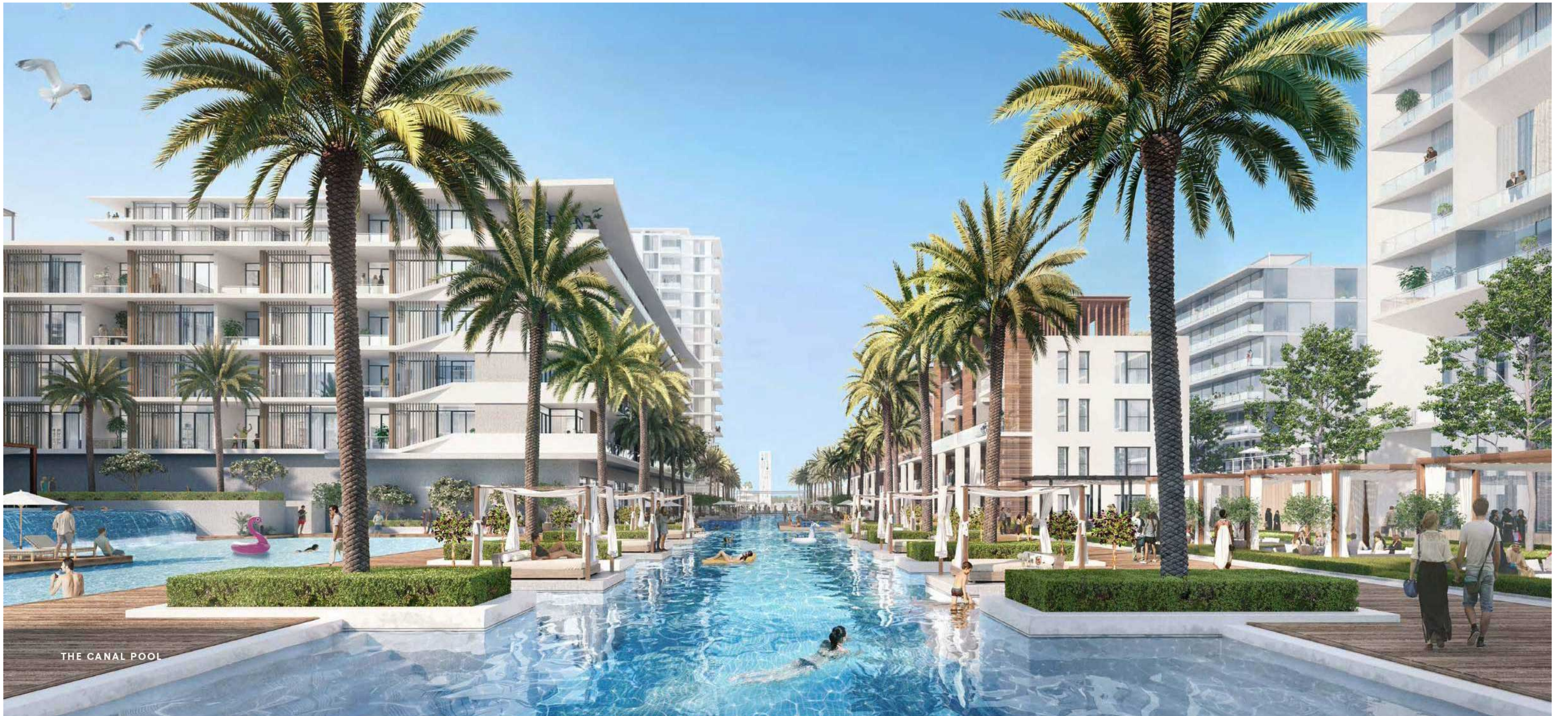


SIRDHANA

A SAILOR'S PARADISE

SIRDHANA is simply exquisite. Contemporary apartments with glittering glass facades, floor-to-ceiling windows, and generous balconies.

With lots of natural light, two interior colour palettes, and prime views of the waterfront, you will be living in one of the most exclusive residences in Dubai.

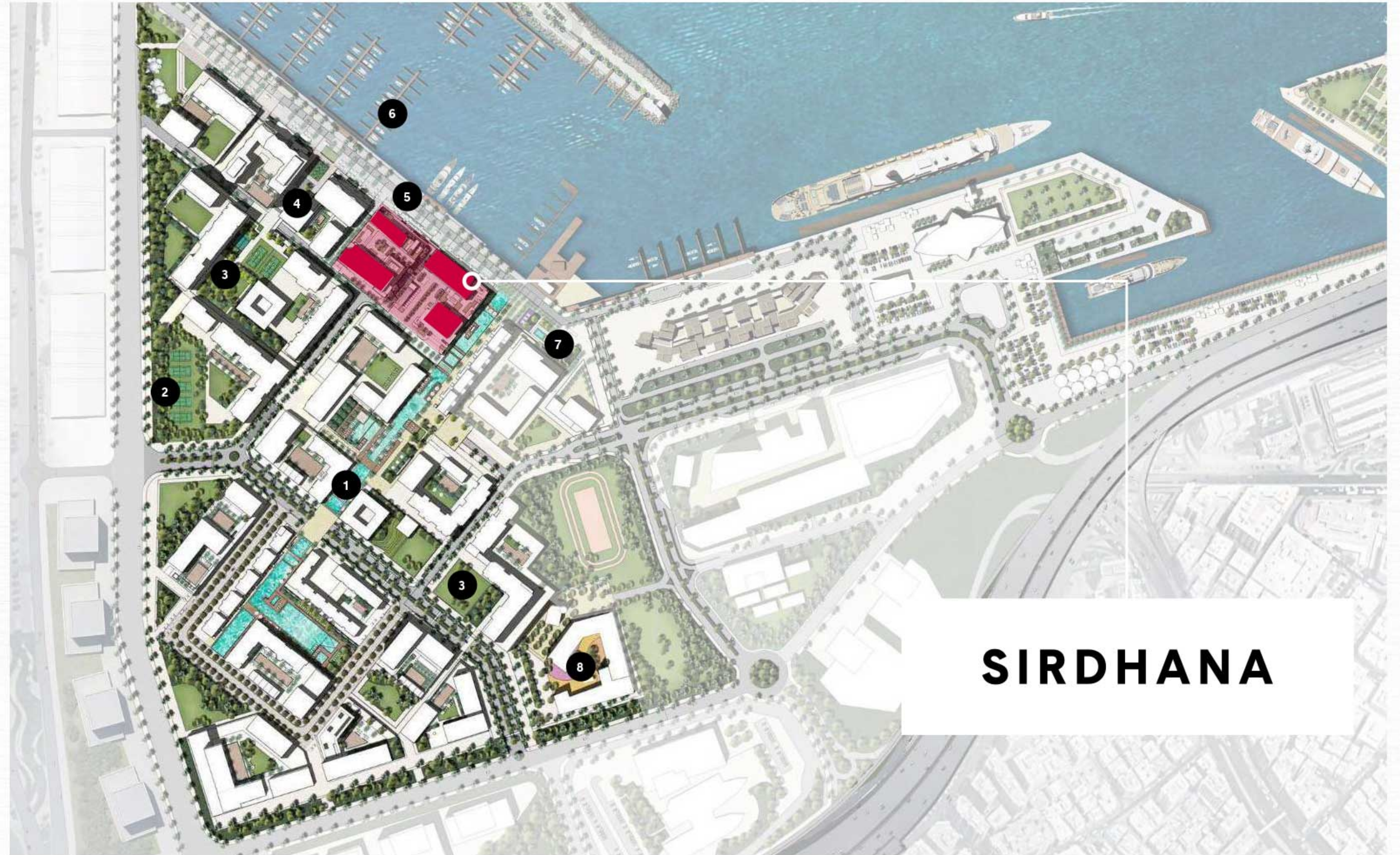


THE CANAL POOL

MINA RASHID

COMMUNITY FEATURES

- 1 THE CANAL POOL
- 2 RECREATIONAL COURTS
- 3 COMMUNITY PARK
- 4 WATERFRONT PLAZA
- 5 BOARDWALK PROMENADE
- 6 BERTHS
- 7 SPLASH PARK
- 8 SCHOOL



SIRDHANA

SIRDHANA

LIVE THE HIGH LIFE

A four building complex, SIRDHANA is located along the lushly landscaped promenade, with prime views of the marina and the Downtown skyline. Step outside on the grand promenade and dip your toes in the 500-metre long canal pool lined with palm trees and cabanas.



**1, 2, 3-BEDROOM
APARTMENTS &
4-BEDROOM PENTHOUSES**



**500-METRE LONG
CANAL POOL**



**RECREATION
ROOM**



**COMMUNITY
PODIUM WITH
A GYM**



**KIDS' PLAY
AREA**



**RETAIL AND
DINING AT YOUR
DOORSTEP**

SIRDHANA



INTRODUCING

SIRDHANA

As a beautiful ode to Dubai's history, the premier residence is aptly named after the British Royal ship, the Sirdhana - the first commercial vessel to call at MINA RASHID in 1970.





Rich Cultural Life
**AN ENCHANTING
JOURNEY**

A celebration of nature, culture, family, and history, your time at MINA RASHID will be defined by experiential moments and discovery.

**PEDESTRIAN OVERPASS
TO THE HOUSE OF
SHEIKH SAEED AL MAKTOUM**

NEW MUSEUM

THEATRE

**QE2 INTERACTIVE EXHIBITION
& THEATRE**

ART GALLERIES





Charming Coastal Town

INDULGE AND INSPIRE

An abundance of parks and boardwalks, vibrant piazzas, and exquisite coastal homes. Combined with a swimmer-friendly canal and beach, all within walking distance.

**VENETIAN
PIAZZA**

**WALKABLE CONNECTIVITY
WITH A BEACH**

**PEDESTRIAN
HARBOUR BRIDGE**

**VIEWS OF BURJ
KHALIFA, DUBAI CREEK
TOWER & THE SEA**

**A FLOATING
RESTAURANT**

**6 INTERCONNECTED
DISTRICT PARKS**

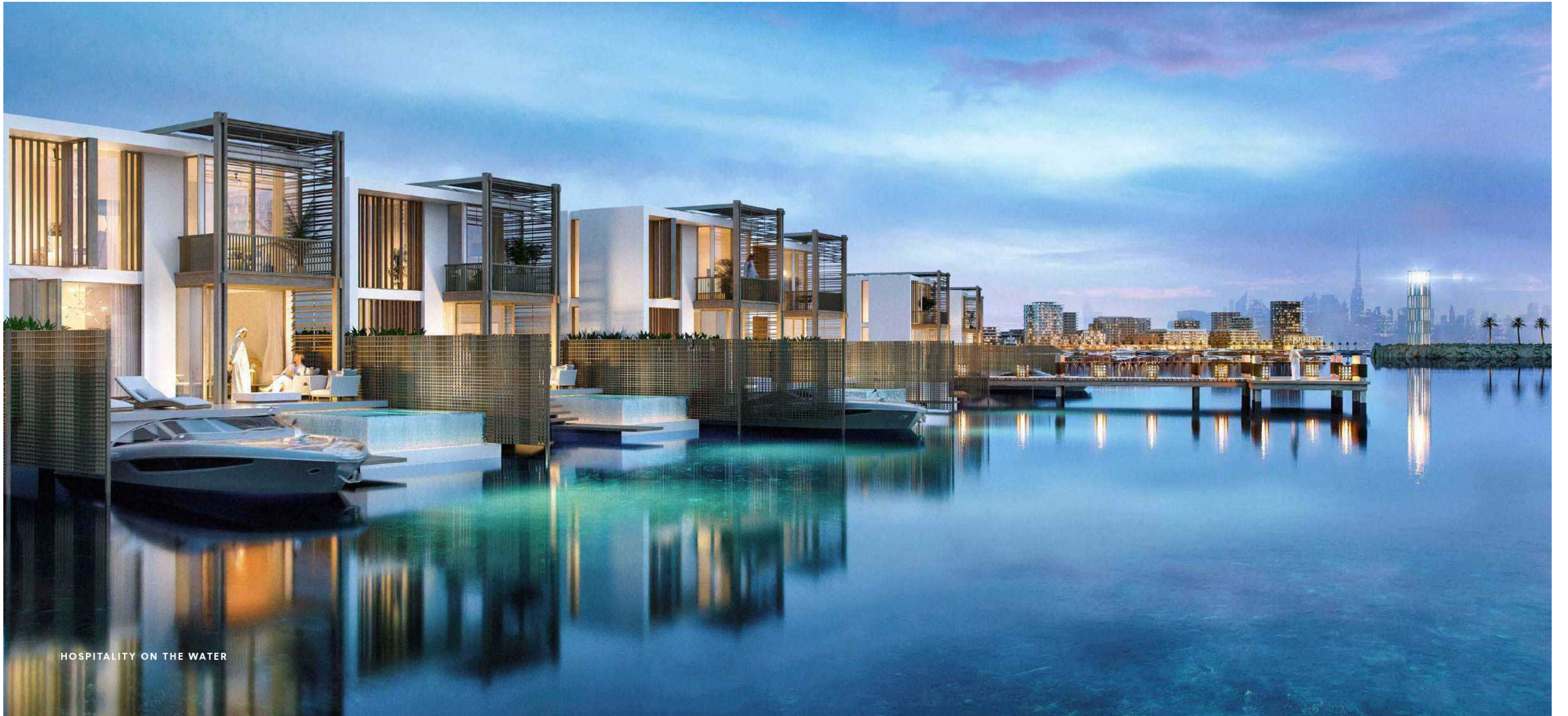


Charming Coastal Town

SPARKLING AND SUNKISSED

A picture-perfect shore of golden sand and turquoise sea, serenaded by the waves and backed by rows of palm trees. It stretches across 12,600 sqm of pristine white sands – the size of 2.5 football fields.





HOSPITALITY ON THE WATER



Riviera Lifestyle
**THE DUBAI MALL
BY THE SEA**

Housing global designer brands and luxury products, 'The Dubai Mall by the Sea' will complement the Riviera lifestyle by offering an elite shopping and dining experience. The first-of-its-kind Dubai Mall extension, with a waterfront address.

**LUXURY
RETAIL**

**FINE DINING
RESTAURANTS**

**SHUTTLE
SERVICES TO
THE DUBAI MALL**





Riviera Lifestyle
**A FRESH WAVE OF
INDULGENCE**

When Dubai's tempo starts to slow down and the rhythm of the sea gently takes over, you'll know you're home. Step onto a visionary waterfront promenade with an array of retail, entertainment and gourmet experiences to suit your every mood and desire.

Some of the riviera-style experiences tailor-made for you include:

**RETAIL AND F&B
FACING THE
MARINA AND
PROMENADE**

**THE
DUBAI MALL
BY THE SEA**

**RESPLENDENT
PARKS AND
PROMENADES**



Riviera Lifestyle

THE WORLD'S NEW SAILING DESTINATION

Let the sea bring you home. Moor your yacht in one of the most exclusive yachting destinations in the world.

**YACHTS UP TO
100M LENGTH**

**A MAINTAINED
DREDGE DEPTH OF
4M BELOW CD**

**GENEROUS
PROMENADES**

**QE2
HOTEL**

**430
WET BERTHS**

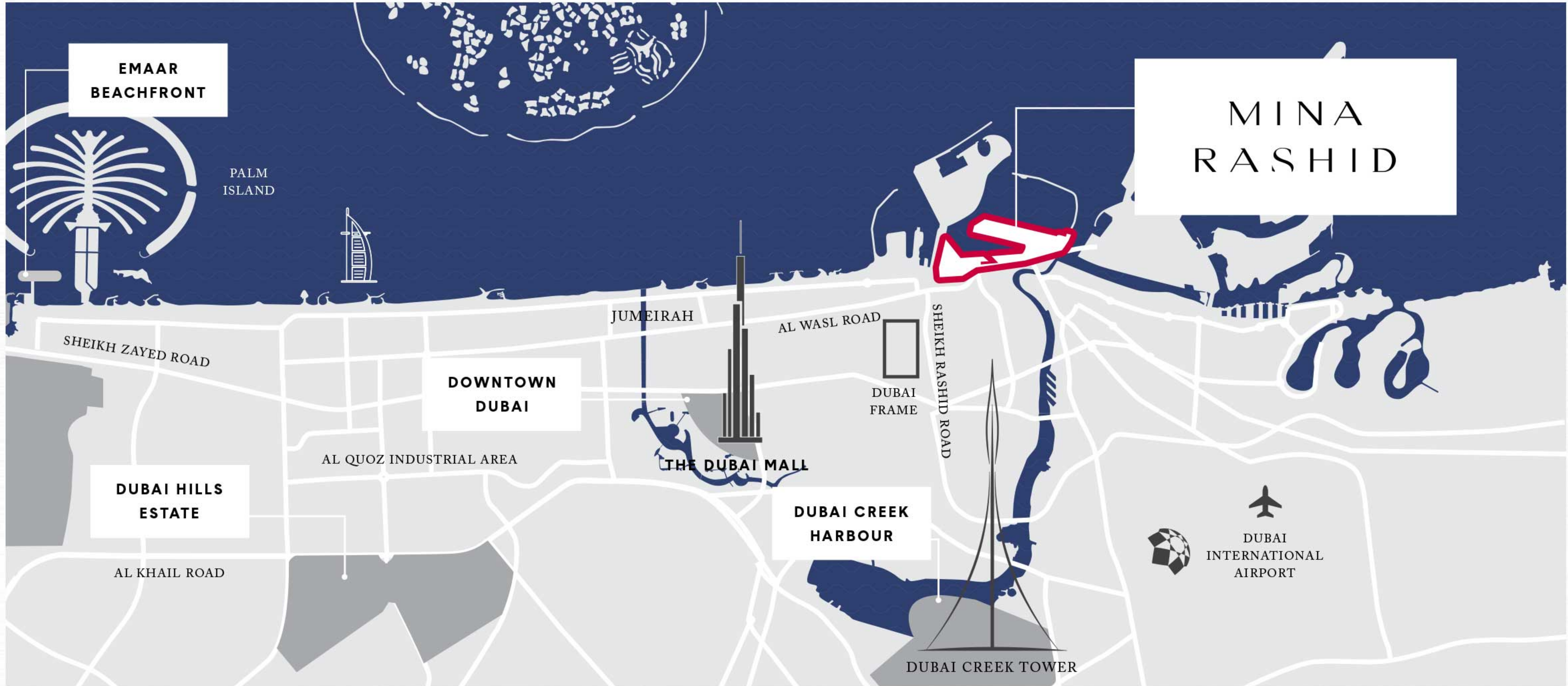


BOARDWALK PROMENADE



MINA RASHID

- | | |
|--|---|
| 1 MARINA, PROMENADE
& THE DUBAI MALL BY
THE SEA | 8 FLOATING
RESTAURANTS |
| 2 THE CANAL POOL | 9 THE BEACH &
VENETIAN PIAZZA |
| 3 QE2 | 10 THE THEATRE |
| 4 HOSPITALITY ON
THE WATER | 11 FERRY STATION |
| 5 FOUNDER'S HOUSE | 12 BOUTIQUE HOTEL |
| 6 PEDESTRIAN BRIDGE | 13 PRIVATE BEACH
CLUB |
| 7 THE MUSEUM | 14 MARINA FITNESS 72 |



**EMAAR
BEACHFRONT**

**MINA
RASHID**

PALM
ISLAND

JUMEIRAH

AL WASL ROAD

SHEIKH RASHID ROAD

SHEIKH ZAYED ROAD

**DOWNTOWN
DUBAI**

DUBAI
FRAME

AL QUOZ INDUSTRIAL AREA

THE DUBAI MALL

**DUBAI CREEK
HARBOUR**

**DUBAI HILLS
ESTATE**



**DUBAI
INTERNATIONAL
AIRPORT**

AL KHAIL ROAD

DUBAI CREEK TOWER



A royal address
By the Arabian Gulf
At the treasured port
Near a historic landmark
A glamorous coastal town
Overflowing with luxurious piazzas,
Shimmering waterways,
And parks full of flowers

This is the riviera life
That **MINA RASHID** powers.

INTRODUCING

MINA RASHID



... SAILS INTO THE FUTURE

Unstoppable Dubai



**A
UNIQUE
HERITAGE...**



RICH COASTAL HERITAGE

THE WORLD'S MOST CELEBRATED OCEAN LINER

An engineering marvel of the 1960s, the QE2 was the fastest ocean liner at the time, with the capacity to travel from Britain to America in just five days.

During a career spanning near 40 years, she carried over 2.5 million passengers and sailed more than 5.6 million miles.

Take a leisurely stroll from your home to revisit the glorious days of the world's most famous ocean liner. Complete with spectacular sunsets over Downtown Dubai.





RICH COASTAL HERITAGE

A ROYAL ADDRESS

MINA RASHID was inaugurated in 1972. The British Royal Mail ship, the SIRDHANA, was the first vessel to dock.

Since then, it became one of the largest ports in the region, home of the famous QE2 floating hotel, and 11-time winner of Middle East's Leading Cruise Port at the World Travel Awards.

Forty-seven years later, EMAAR embarks on a new journey. To celebrate and preserve the Al Maktoum royal family's heritage while bringing an inspired vision of luxury coastal living to this prestigious site.



MINA RASHID

A DREAM COME TRUE

From fishermen and pearl divers to dhow builders and traders, few cities in the world can boast such richness of maritime history.

Memories of Dubai are inherently tied to the sea. Since the early 1900s, rich cargoes from across the world have been traversing its shores.

By the 1970s, the soaring trade of Dubai, or 'City of Merchants' as it was fondly called, demanded a new infrastructure; the late Sheikh Rashid bin Saeed Al Maktoum conceived the idea of dredging Dubai Creek to allow large shipping vessels to enter.

Sheik Rashid's dream flourished to become the commercial centre between the east and the west - MINA RASHID.





SHEIKH RASHID

THE ARCHITECT OF MODERN DUBAI

The eighth ruler from the Al Maktoum royal family, Sheikh Rashid bin Saeed Al Maktoum is much beloved by residents of Dubai.

His legacy is filled with compassion, generosity and a steadfast determination to transforming the Emirate into a modern city.

A few shining examples of the architectural foundations he laid for Dubai's future include:

MINA RASHID

A luxurious port receiving half a million visitors each year

DUBAI AIRPORT

The world's busiest airport by international passengers

WORLD TRADE CENTRE

The region's largest purpose-built complex for events and exhibitions



Toll Free: **800 326 800**

Email: info@famproperties.com

Web: www.famproperties.com